



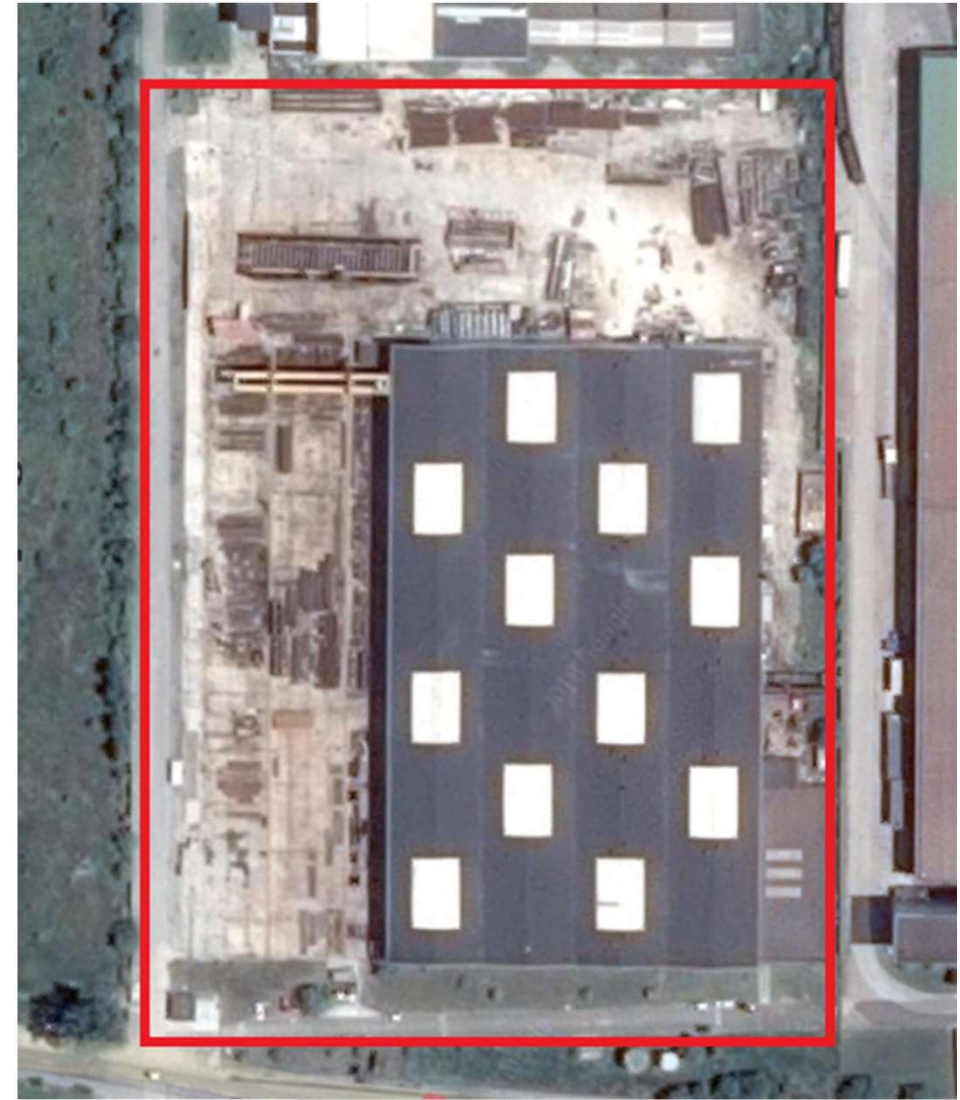
STEEL STRUCTURES COMPANY IN ROMANIA

MAY 2023



KEY FACTS

- Actively operating since 2005
- Proven track record in modeling, fabrication and erection of complex and heavy metallic structures, closely supporting customers with value engineering solutions
- Wide experience delivering projects all over Romania and internationally to Europe, America, Africa and Middle East.
- Area : 15.000m² factory surface (covered) in 50.000m² plot
- Capacity: 5.000 to 6.500 tonnes /year
- Part of a multinational group with wide experience in metallic structures among other areas



STRENGTHS OF THE COMPANY

- Solid knowledge of the market and strong relations with the key players both in the local and abroad markets
- Good market reputation on execution of complex infrastructures, especially bridges
- Unique capacity to perform well on the most demanding and complex projects worldwide
- Close relations with regular clients, usually recurrent (main international contractors)

MANAGEMENT STRUCTURE

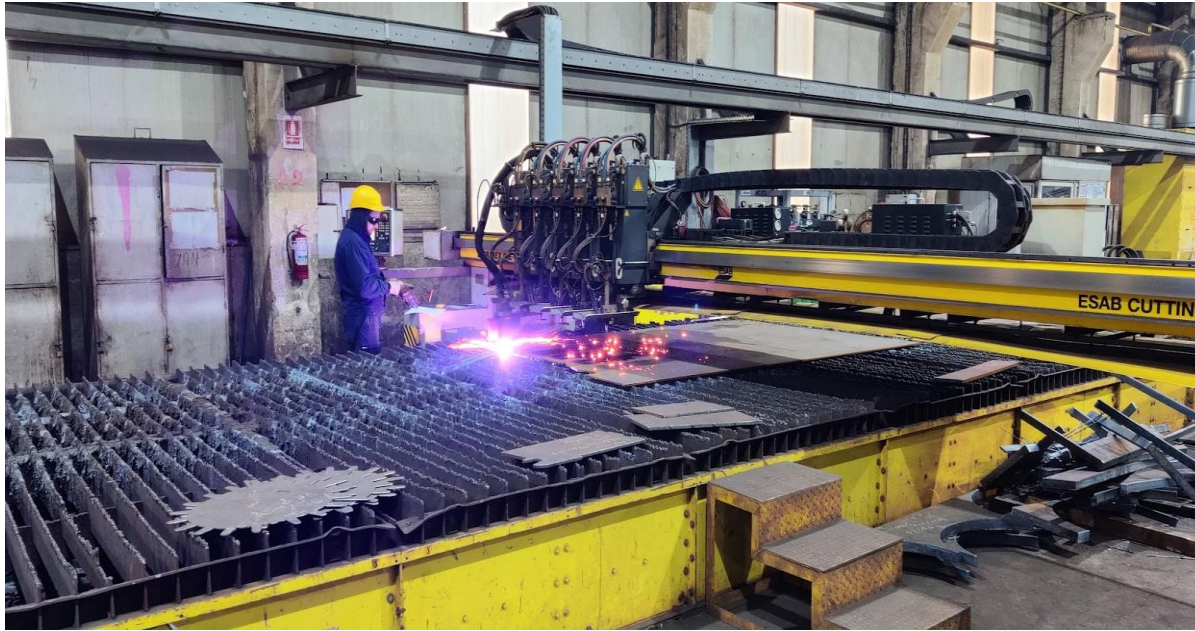
- Lean management structure
- Management Team, reporting to the Board, with two persons transversally responsible for operations (including projects and factory) and finance/administrative (including all back-office departments).



HUMAN RESOURCES

TOTAL: 107

- Locksmiths: 26
- Welders: 21
- Cutting: 9
- Shotblasters: 4
- Painting: 3
- Expedition: 2
- Wareh/Maint. 7
- QSE 8



MAIN EQUIPMENT & TECH STRUCTURE

CUTTING EQUIPMENT - PLATES

- Oxygen / Plasma ESAB SXE-P3 6500 (1x)
- Oxygen ESABHANCOLK (1x)
- Drilling HARTFORD HV70A (1x)
- Drilling FICEP P803A (1x)
- Guillotine – ADIRA GHO1030 (1x)

CUTTING EQUIPMENT - PROFILES

- Cutting and drilling KALTENBACH KDS 1015 (1x)
- Cut BOMAR TRANSVERSE 510330DGH (1x)
- Cut DANOBAT CPI70.50DI (1x)
- Radial drilling AJAX AJ 155 (1x)

WELDING EQUIPMENT

- Submerge welding (2x)
- Multitrack ESAB LAF 1000 (2x)
- Stud Welding Gun NELSON NETWELD 6000 (1x)
- Welding equipments MIGMAG SAFA DIGISTEEL (12x)
- Welding equipments MIGMAG MILLER DIMENSION (2x)
- Welding equipments MIGMAG KEMPPII (20x)
- Welding equipments MIGMAG FRONIUS (11x)
- Plasma manual Hypertherm Powermax (1x)

PAINTING EQUIPMENT

- Airless Sprayers GRACO / X 60 /220 CC (3x)
- Shot blasting equipments - AIR BLAST A.B.S.C. (3x)
- Shot blasting camera 24m x 6m x 6m (1x)

LIFTING EQUIPMENT

- Overhead cranes (12x from 10T to 32 Tons)
- Electro Magnets (2x)

TECHNOLOGICAL STRUCTURE

➤ **ERP » SAP R/3** modules:

- Human Resources (SAP HR)
- Production Planning (SAP PP)
- Material Management (SAP MM)
- Sales and Distribution (SAP SD)
- Project System (SAP PS)
- Financial Accounting and Controlling (SAP FICO)
- Plant Maintenance (SAP PM)
- Quality Management (SAP QM)

CERTIFICATIONS

- Quality Management system, according to ISO 9001:2015 standard, attested by “TUV Rheinland Cert GmbH” with certification nr 01 100 1521238;
- Environment Management system according to ISO 14001:2015 standard, attested by “TUV Rheinland Cert GmbH” with certification nr 01 104 1521238;
- Safety Management System according to ISO 45001:2018 standard, attested by “TUV Rheinland Cert GmbH” with certification nr 01 213 1521238;
- Production Process – Factory and Welding – certification according to EN 1090 attested by “TUV Rheinland Cert GmbH” » Execution Class 4 (EXC 4)



STEEL STRUCTURES COMPANY IN ROMANIA

PRODUCTION SHOTS



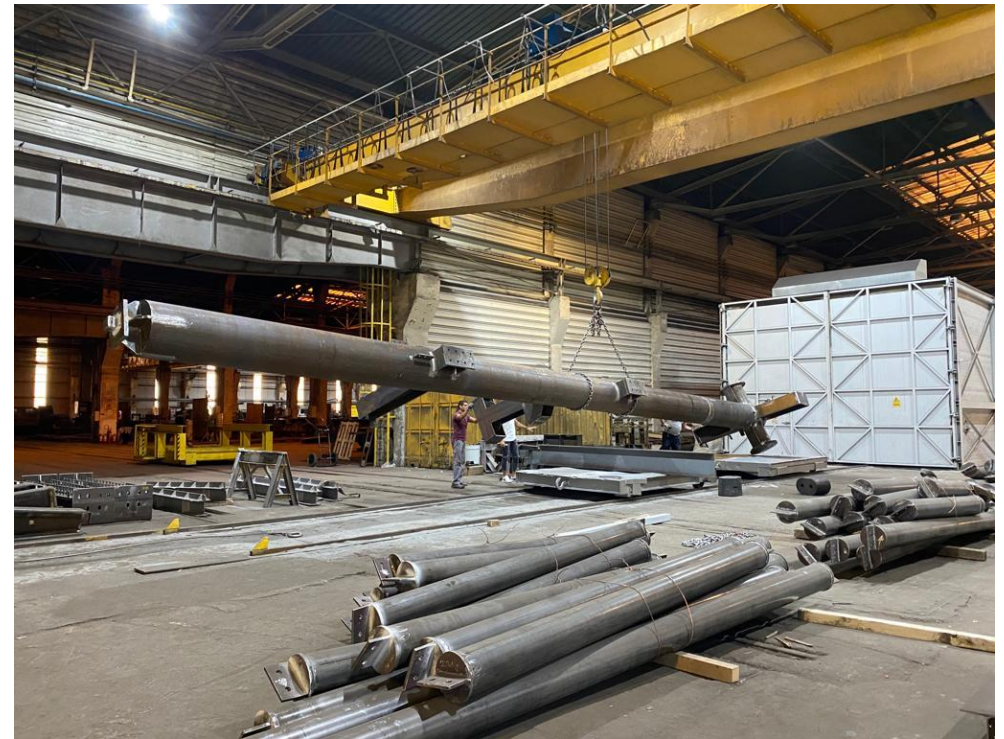
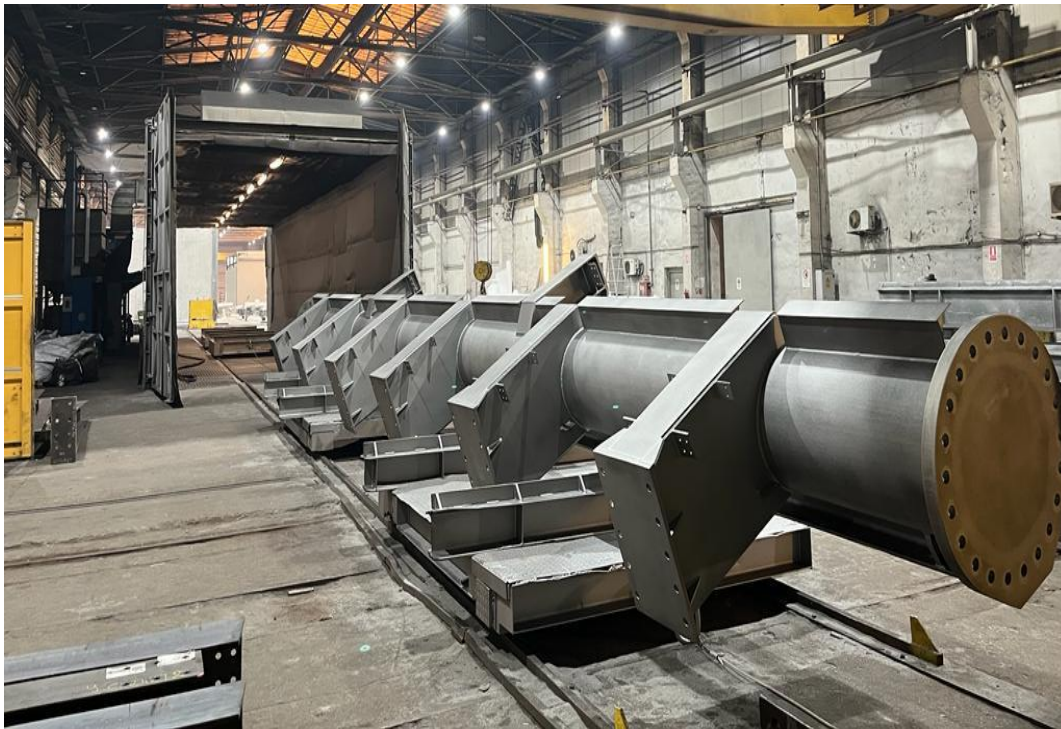
STEEL STRUCTURES COMPANY IN ROMANIA

PRODUCTION SHOTS



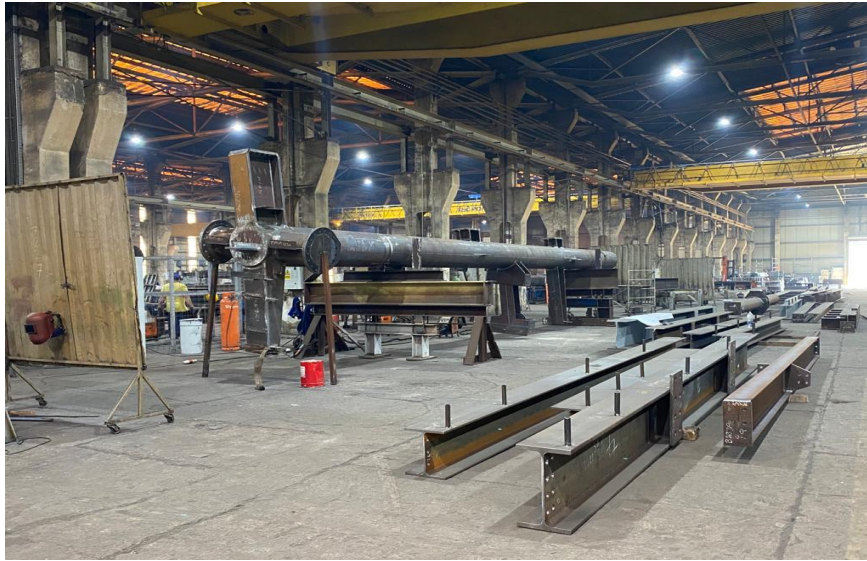
STEEL STRUCTURES COMPANY IN ROMANIA

PRODUCTION SHOTS



STEEL STRUCTURES COMPANY IN ROMANIA

PRODUCTION SHOTS



STEEL STRUCTURES COMPANY IN ROMANIA

PRODUCTION SHOTS



Gelen Evrak Tarih ve Sayısı: 31.07.2023 - 44073043 - 720.06.01 - 4356